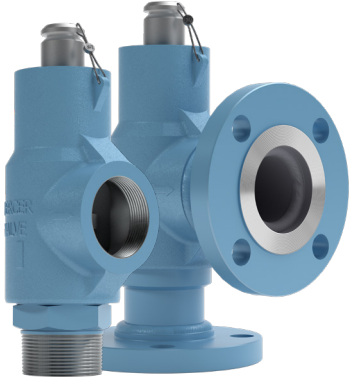


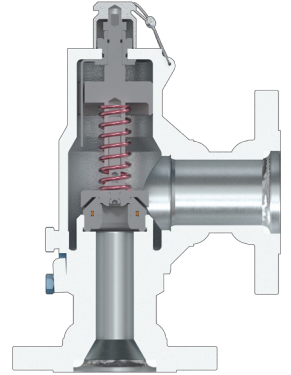
MERCER VALVE CO., INC.

PRODUCT LINE

9100 SPRING OPERATED SERIES



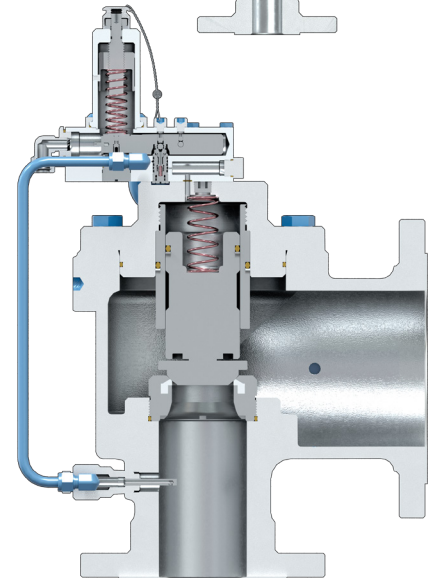
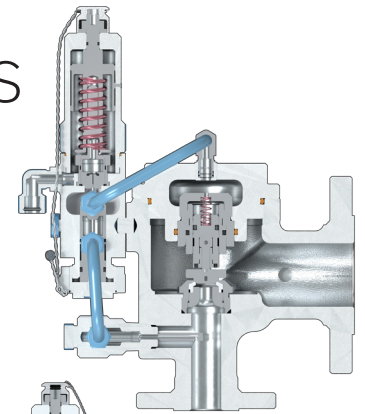
- Flanged and Threaded
Flanged orifices from "C" through "P"
- Threaded orifices from "C" through "K"
- Flanged inlet sizes of NPS ½" through 4" (DN 15 through 100)
- Threaded inlet sizes of NPS ½" to 3" (DN 15 through 80)
- Pressures from 15 PSI through 3500 PSI
(103 kPa through 24132 kPa)
- ASME BPVC Section XIII UV Stamped for air/gas & liquid
- Additional options include: Lift Lever, Test Gag, and Inlet Pipe Tap



9500 PILOT OPERATED SERIES



- Snap and Modulating Pilots
- API orifice sizes of "D" through "T"
- Full Bore orifice sizes of 1.5" through 8"
- Available with flanged inlet sizes of NPS 1" through 8"
(DN 25 through 200)
- Snap pressures from 15 PSI through 4500 PSI
(103 kPa through 31026 kPa)
- Modulating pressures from 15 PSI through 1480 PSI
(103 kPa through 10204 kPa)
- Snap pilots include: ASME BPVC Section XIII UV
Stamped for air/gas
- Modulating pilots include: ASME BPVC Section
XIII UV Stamped for air/gas & liquid
- Additional options include: Backflow Preventer,
Field Test, Connection, Auxiliary Supply Filter, and
Pressure Snubber



© 2023 Copyrights and Trademarks held by Mercer Valve Co., Inc.®



THINK...MERCER FIRST®

Mercer Valve Co., Inc.® proudly provides a Made in the USA manufactured high-quality pressure relief valve. Our "Auto Seat Technology"™ has a proven extended seat life that will allow your valve to Open, Close, Seat and Seal™ over and over again.

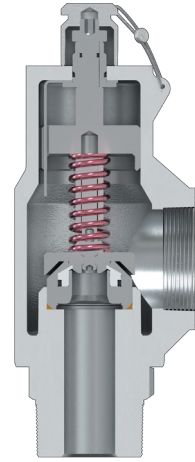
MERCER VALVE CO., INC.

PRODUCT LINE



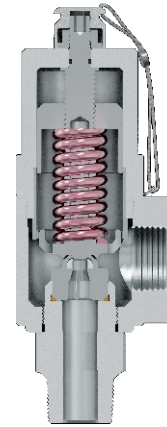
8100 SERIES

- Available in ½" diameter orifice "E" and ¾" diameter orifice "G"
- Available with threaded inlet sizes of NPS ¾" through 2" (DN 20 through 50)
- Pressures from 15 PSI through 2000 PSI (103 kPa through 13790 kPa)
- ASME BPVC Section XIII UV Stamped for air/gas & liquid
- Additional options include: Lift Lever, Test Gag, and Inlet Pipe Tap



9100 MODEL 20 SERIES

- Available in "C" and "D" orifice
- Available with NPS ¾" through 1" inlets (DN 20 through 25)
- High pressure relief valve for pressures from 3000 PSI through 8700 PSI (20681 kPa through 59984 kPa)
- Available with threaded or flanged connections
- ASME BPVC Section XIII UV Stamped for air/gas & liquid
- Additional options include: Lift Lever, Test Gag, and Inlet Pipe Tap



1400 SERIES

- Available in "B" orifice
- Threaded inlet sizes of NPS ½", ¾", 1" (DN 15, 20, & 25)
- Pressures from 150 PSI through 6000 PSI (1034 kPa through 41368 kPa)
- ASME BPVC Section XIII UV Stamped for air/gas
- Additional options include: Lift Lever, Test Gag, and Inlet Pipe Tap

